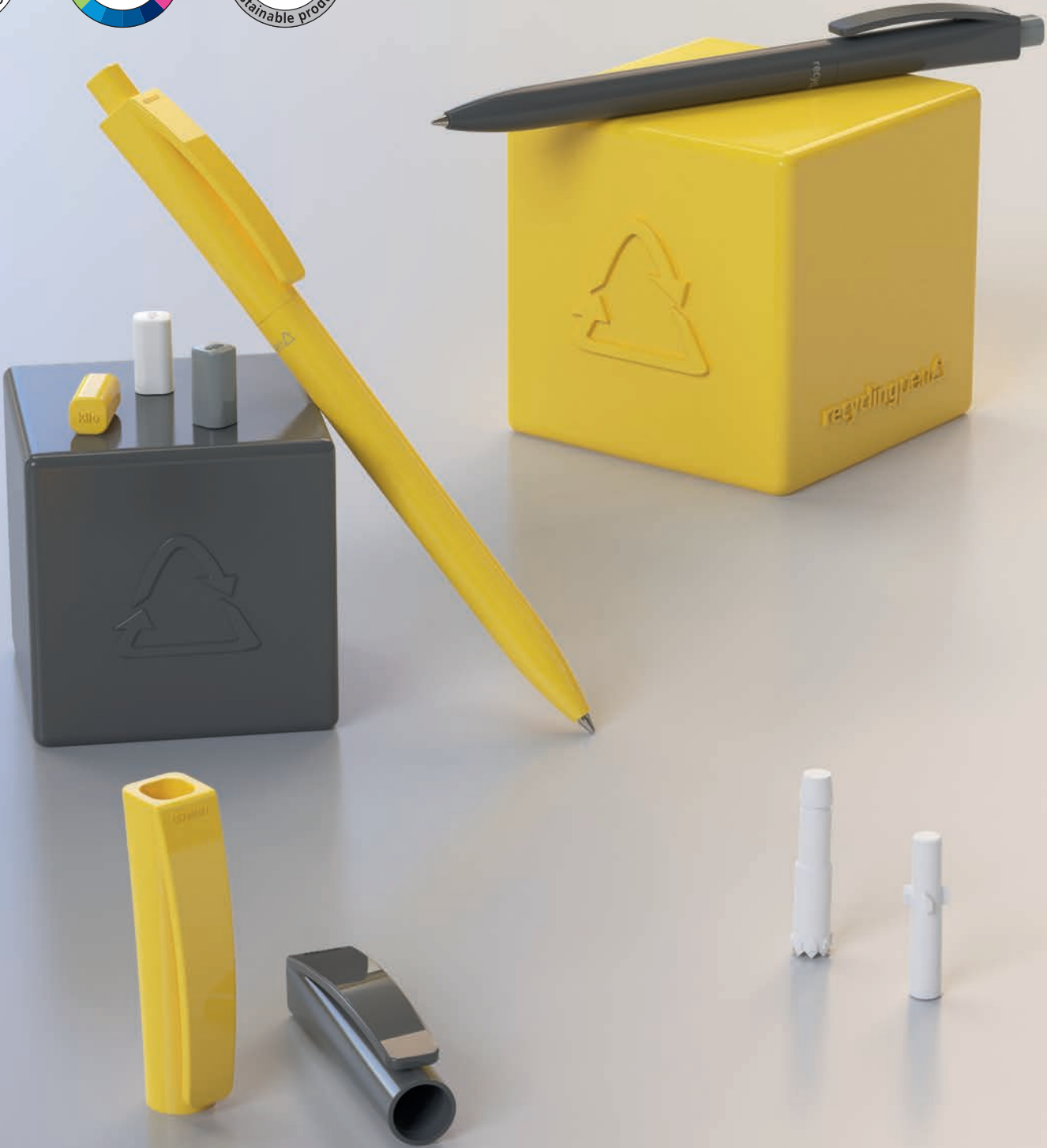
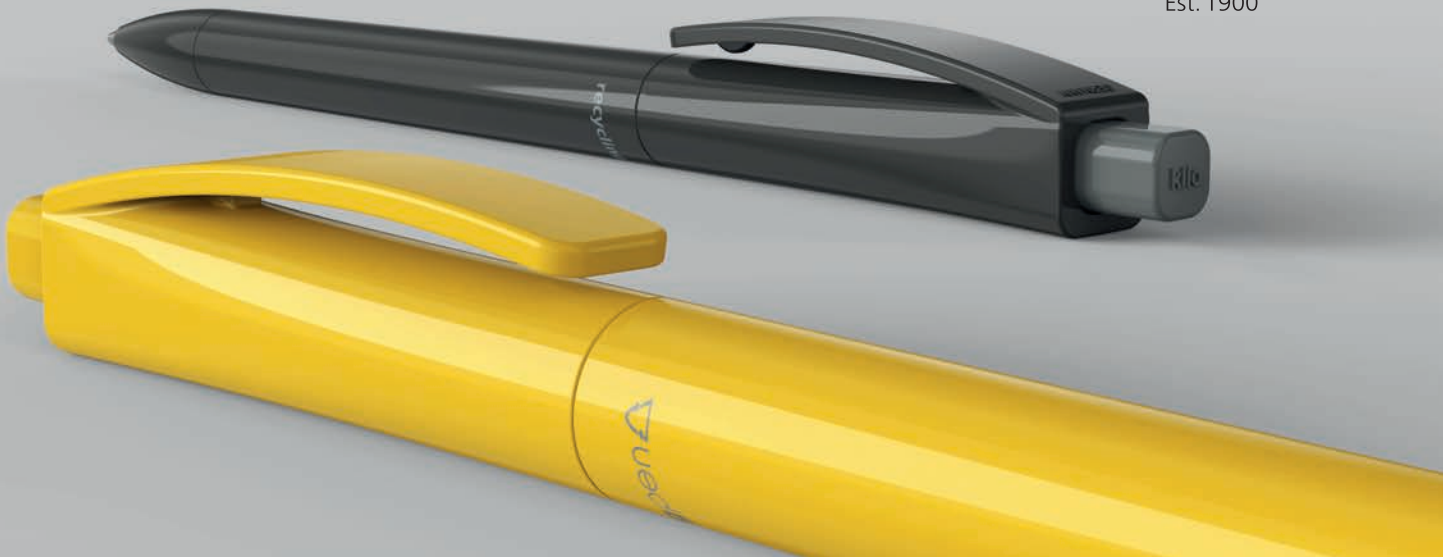


New

Qube recycling

Sustainable and modern





SUSTAINABLE MODEL VARIANT

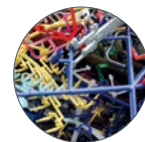
Both the barrel and the mechanism of the modern Qube recycling retractable ballpoint pen are made of recycled plastics. The Qube recycling also has an attractive appearance. In addition to the rectangular upper part, which can be personalised on all four sides, the wide clip is particularly eye-catching.

Like all sustainable recycling pens of the klio eco® brand, the Qube recycling is also marked with the label „recyclingpen“.

recyclingpen 

SUSTAINABLE MANUFACTURING - MADE IN GERMANY

The production of our recycled products focuses on the reuse of plastics. We carry the „climate-neutral site“ seal (Scope 1 + 2) and produce with photovoltaics and 100% green electricity at our German production site.



Plastic residues



Recycled plastic

QUALITY REFILL SILKTECH L

The Qube recycling is equipped with our own Silktech L refill. It convinces with a sustainable writing length of 3,000 m and a pleasant writing comfort. It is also document-proof and can be optionally extended to 5,000 m writing length.



EXTENSIVE VARIETY OF COLOURS

The Qube recycling model is available in 14 standard colours. From an order quantity of 5,000 pieces, the versatile writing instrument can even be customised into individual corporate colours. Based on the flexible „mix it, match it“ concept, the components of the sustainable model can be combined in any colour at no extra charge. In this way, unique writing instruments are created in countless colour combinations.